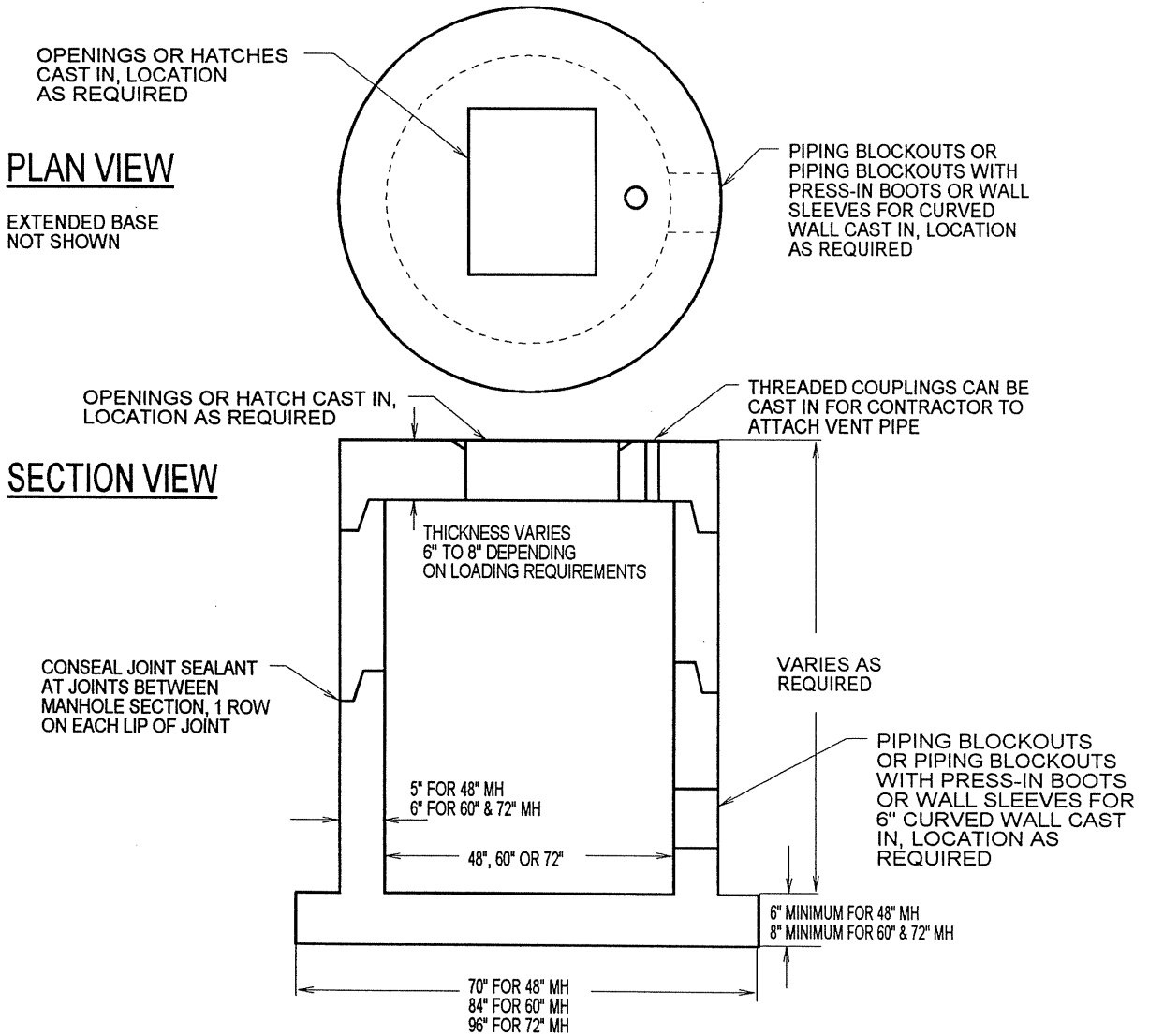


# PRECAST CONCRETE LIFT STATION

48", 60" OR 72" INSIDE DIAMETER  
USED FOR SMALL CAPACITY APPLICATIONS



CONCRETE - 4,000 P.S.I. (MINIMUM)  
MANUFACTURED TO ASTM C-478 FOR AASHTO HS-20-44 LOADINGS  
MONOLITHIC PRECAST BASE REINFORCED WITH #4 @ 12" O.C.E.W.  
2" CLEARANCE OFF TOP FACE

ACTUAL DIMENSIONS OF CONCRETE PRODUCTS MAY VARY SLIGHTLY  
DRAWING IS NOT TO SCALE



11/97

12650 Tucson Street • Henderson, Colorado 80640 • 303-659-3747, Fax 303-659-1333  
2671 So. Greeley Hwy • Cheyenne, Wyoming 82007 • 307-634-0695, Fax 307-634-0694  
10021 Amarillo Blvd. East • Amarillo, Texas 79107 • 806-374-3747, Fax 806-335-3717