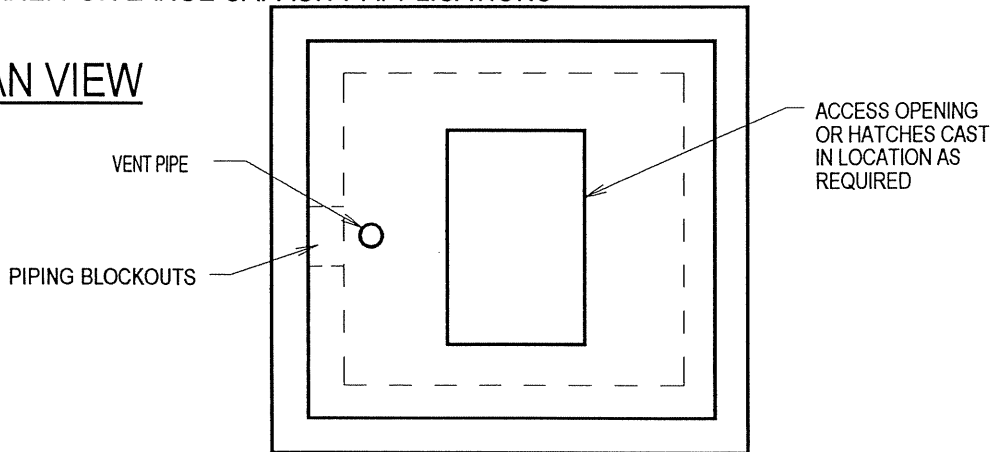


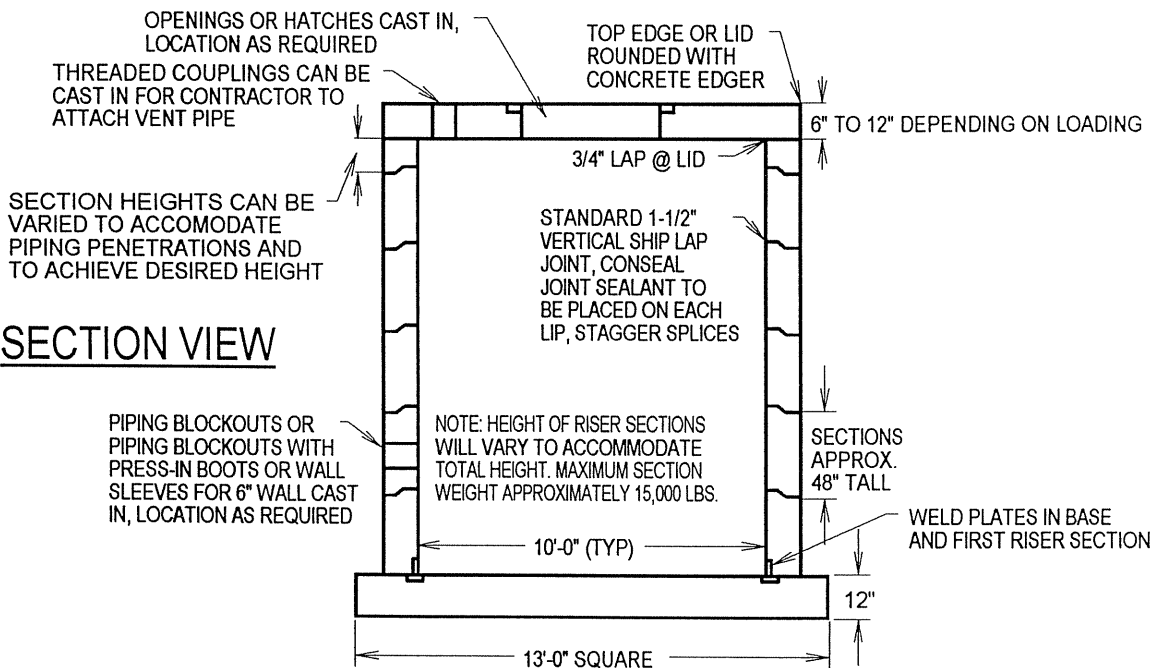
# PRECAST CONCRETE LIFT STATION

10' WIDE X 10' LONG X UP TO 32' HIGH INSIDE DIMENSIONS  
 SQUARE: FOR LARGE CAPACITY APPLICATIONS

## PLAN VIEW



## SECTION VIEW

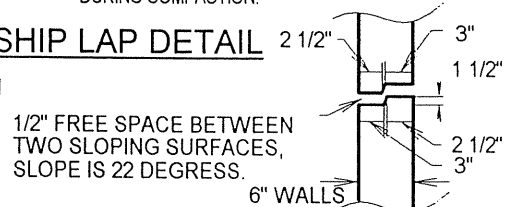


PRECAST BASE USED WHEN SUITABLE  
 PRECAST BASE SIZE AND THICKNESS CAN BE MODIFIED AS REQUIRED  
 PRECAST BASE AS SHOWN WEIGHS APPROXIMATELY 26,000 LBS.  
 TOP WEIGHS APPROXIMATELY 18,500 LBS. IF 12" THICK, 10,000 LBS. IF 6" THICK  
 CONCRETE - 5000 P.S.I., REINFORCING TO BE GRADE 60 MINIMUM.  
 SUITABLE FOR HS-20-44 LOADINGS IF REQUIRED  
 STRUCTURAL DESIGN IS BASED ON 45 PCF OR 62.4 PCF EQUIVALENT FLUID PRESSURES  
 STRUCTURAL DESIGN INFORMATION PROVIDED WITH PRODUCT SUBMITTALS  
 WELD PLATES PROVIDED IN PRECAST BASE AND CORNERS  
 OF FIRST RISER SECTION TO ALLOW FIELD WELDING TO PROVIDE RIGID CONNECTION  
 BETWEEN BASE AND RISER.

ACTUAL DIMENSIONS OF CONCRETE PRODUCTS MAY VARY SLIGHTLY  
 DRAWING IS NOT TO SCALE

NOTE: BACKFILL MATERIAL TO BE SUITABLE,  
 NONEXPANSIVE TYPE MATERIAL. BACKFILL  
 IS TO BE EVENLY PLACED ON ALL SIDES  
 DURING BACKFILL OPERATION. CARE IS TO  
 BE TAKEN NOT TO EXCEED DESIGN LOADS  
 DURING COMPACTION.

## SHIP LAP DETAIL



**Vaughn**  
**concrete products, inc.**

11/97

12650 Tucson Street • Henderson, Colorado 80640 • 303-659-3747, Fax 303-659-1333  
 2671 So. Greeley Hwy • Cheyenne, Wyoming 82007 • 307-634-0695, Fax 307-634-0694  
 10021 Amarillo Blvd. East • Amarillo, Texas 79107 • 806-374-3747, Fax 806-335-3717