

# PRECAST CONCRETE GREASE INTERCEPTOR

1000 GALLON CAPACITY  
FOR NON-TRAFFIC APPLICATIONS  
STANDARD FOR LUBBOCK & ODESSA, TX

IT IS THE EXCAVATOR'S OR  
INSTALLER'S RESPONSIBILITY  
TO REQUEST OUR  
**INSTALLATION GUIDELINES**  
PRIOR TO INSTALLING THIS  
TANK

## MONOLITHIC BODY NO SEAMS OR JOINTS

3" THICK FLOOR  
4" THICK WALLS & NON-TRAFFIC LID

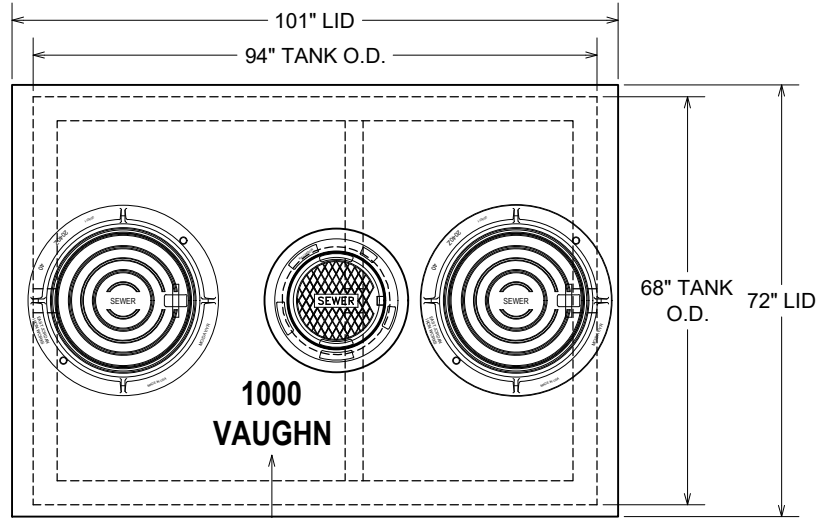
2 COMPARTMENT TANK WITH  
APPROXIMATELY 60% OF CAPACITY ON  
INLET SIDE

TANK IS PROVIDED WITH NOTCHES IN  
SIDEWALLS FOR SLIP-IN DIVIDER WALL

WITHSTANDS UP TO 6' OF BURY, RISERS  
ARE AVAILABLE FOR INLET & OUTLET

### OPTIONS:

- 24" ID CONCRETE MH RISERS AVAILABLE IN 2", 3", 4", 6", 8" OR 12" HEIGHTS
- 18" ID CENTER ACCESS CONCRETE RISERS: 10 $\frac{5}{8}$ " TALL FOR USE w/6" TALL MH RISER  
16 $\frac{5}{8}$ " TALL FOR USE w/12" TALL MH RISER  
4' TALL RCP SECTION FOR CONTRACTOR TO CUT TO SPECIFIC HEIGHTS
- LID SECTION FOR TRAFFIC LOADINGS
- GAS TIGHT CAST IRON RINGS & COVERS



PLAN VIEW

DURING PRODUCTION, "TANK SIZE" & "VAUGHN" ARE STAMPED IN LID, "IN" & "OUT" ARE MARKED ON TANK ENDS

18" DIAMETER CAST IRON RING & COVER

OPTIONAL 18" ID PRECAST CONCRETE RISER 4 $\frac{5}{8}$ " TALL;  
CONTRACTOR MAY USE HDPE PIPE FOR RISER IN  
NON-TRAFFIC AREAS

OUR STANDARD 24" DIAMETER CAST IRON  
RINGS & COVERS, TYP. OF 2

CONSEAL JOINT SEALANT &  
CONTRACTOR TO GROUT, TYP.

PIPING BLOCKOUTS WITH POLYLOK PIPE SEALS  
CAST IN TANK FOR INLET & OUTLET PIPING  
(TYPICAL)

CONTRACTOR'S 4" PIPES

**CONTRACTOR SUPPLIED**  
4" SDR35 INLET & OUTLET TEES

APPROVED BY: \_\_\_\_\_

DATE: \_\_\_\_\_

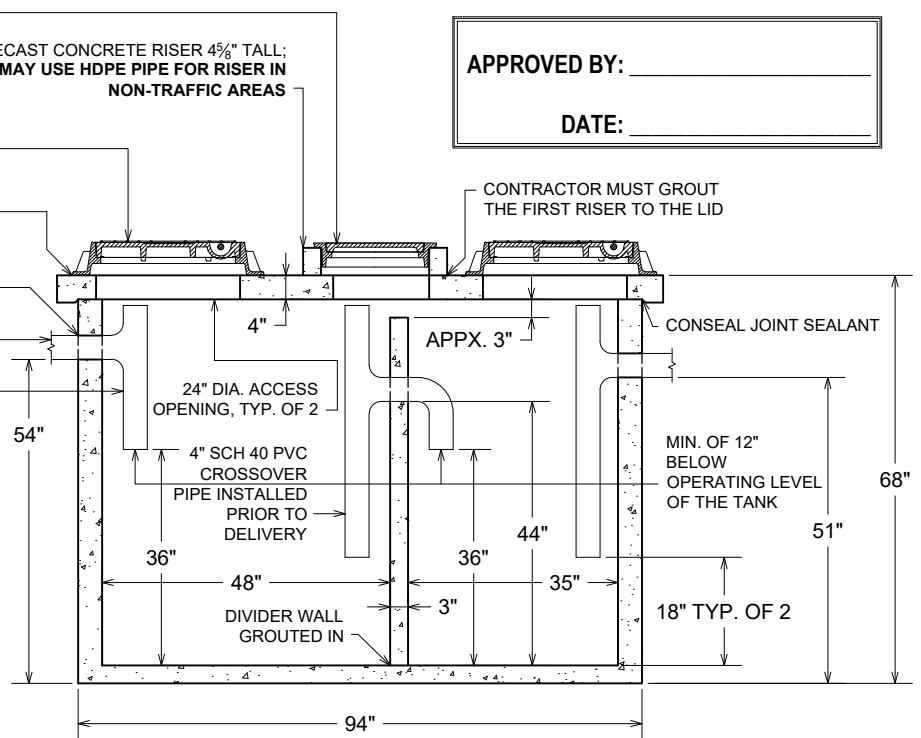
CONTRACTOR MUST GROUT  
THE FIRST RISER TO THE LID

### TANK WEIGHTS:

- TANK LID : 2,800 LBS.
- TANK WITH DIVIDER ONLY : 8,000 LBS.
- COMPLETE INTERCEPTOR : 10,800 LBS.

### DIGGING SPECIFICATIONS:

- 54" BELOW THE INLET
- EXCAVATION: 7'-0" WIDE X 10'-0" LONG
- SEE OUR **INSTALLATION GUIDELINES** PRIOR TO INSTALLING THIS TANK



SECTION VIEW

CONCRETE : 4,000 P.S.I. (MINIMUM)  
REINFORCING : REBAR & WELDED WIRE FABRIC

ACTUAL DIMENSIONS OF CONCRETE PRODUCTS MAY VARY SLIGHTLY

DRAWING IS NOT TO SCALE

**vaughn**  
**concrete products, inc.**

1000 GAL GI, NON-TRAFFIC-LUBBOCK.DWG  
DATE CREATED: 11 / 2011  
UPDATED: 8 / 2021

10021 Amarillo Blvd East • Amarillo, Texas 79108 • 806-374-3747, Fax 806-335-3717

[www.vaughnconcreteproducts.com](http://www.vaughnconcreteproducts.com)