

# PRECAST CONCRETE SEPTIC TANKS

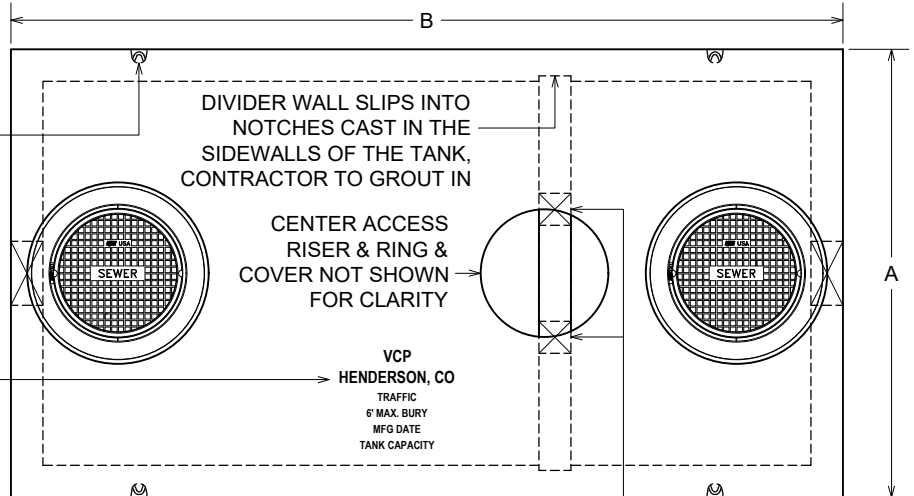
## 2000 GALLON & LARGER CAPACITIES

MANUFACTURED TO ASTM C1277

**IT IS THE EXCAVATOR'S OR INSTALLER'S RESPONSIBILITY TO REQUEST OUR INSTALLATION GUIDELINES PRIOR TO INSTALLING THIS TANK**

SECTIONS TO EACH LIFT FROM 4 RECESSED GALVANIZED LIFT BARS USING 3-TON OPEN HOOKS OR 3/4" SHACKLES

PLAN VIEW



TOP OF TANK STAMPED AS SHOWN; "IN" & "OUT" ARE MARKED ON TANK ENDS

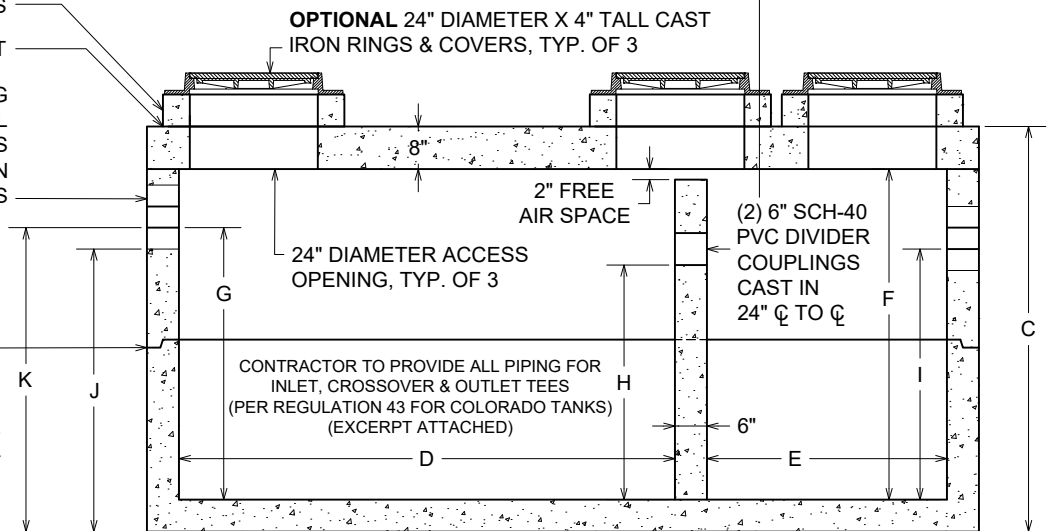
**OPTIONAL 24" I.D. MANHOLE RISERS AS REQUIRED TO ADJUST RINGS & COVERS TO GRADE, TYP. EACH ACCESS**

1 ROW JOINT SEALANT

12" DIAMETER PIPING BLOCKOUTS CENTERED IN WALL WIDTH OF INLET & OUTLET ENDS OF TANK WITH PRESS-IN GASKETS FOR 4", 6" OR 8" PIPES

2 ROWS JOINT SEALANT

SECTION VIEW



"G", "H", "I" & "K" DIMENSIONS: ALL ARE TO THE PIPE INVERT

\*"J" DIMENSION: IS APPROXIMATE HEIGHT FROM BOTTOM OF PRECAST UNIT TO BOTTOM OF 12" HOLE, NOT TO BOTTOM OF THE PIPE INVERT

\*\*"K" DIMENSION: IS FOR DIGGING INFORMATION ONLY, APPROXIMATE HEIGHT FROM BOTTOM OF TANK TO THE PIPE INVERT, EXCAVATION SHOULD ALLOW 1' ON EACH SIDE OF TANK FOR SLING REMOVAL

FLOOR & WALLS 6" THICK, LID 8" THICK

REINFORCED FOR AASHTO HS-20-44 LOADINGS  
CONCRETE: 5000 P.S.I. MINIMUM

LARGER SIZE UNITS UP TO 30,000 GALLONS ARE AVAILABLE - CALL FOR INFORMATION

DRAWING IS NOT TO SCALE

ACTUAL DIMENSIONS OF CONCRETE PRODUCTS MAY VARY SLIGHTLY

SEPTIC TANK DIMENSIONS					
	2000	2500	3000	3500	4000
A	7'-0"	7'-0"	7'-0"	7'-0"	7'-0"
B	13'-0"	13'-0"	13'-0"	17'-0"	17'-0"
C	76"	88"	100"	89"	98"
D	93"	93"	93"	120"	120"
E	45"	45"	45"	66"	66"
F	62"	74"	86"	75"	84"
G (4" PIPE)	51"	63"	75"	64"	73"
G (6" PIPE)	50"	62"	74"	63"	72"
G (8" PIPE)	49"	61"	73"	62"	71"
H	44"	56"	68"	57"	66"
I (4" PIPE)	47"	59"	71"	60"	69"
*J	53"	65"	77"	66"	75"
DIGGING DEPTH INFORMATION					
**K (4" PIPE)	57"	69"	81"	70"	79"
**K (6" PIPE)	56"	68"	80"	69"	78"
**K (8" PIPE)	55"	67"	79"	68"	77"
SURFACE AREA	~69 SQ FT	~69 SQ FT	~69 SQ FT	~93 SQ FT	~93 SQ FT
TOTAL APPROXIMATE WEIGHTS (IN LBS)					
	31,500	34,900	38,200	43,500	46,800
HEAVIEST PIECE (MAX. WEIGHT) BASED ON EQUAL HEIGHT SECTIONS (IN LBS)					
	15,000	16,200	17,400	20,500	22,000

2000+ GALLON STDWG  
DATE CREATED: 4/16  
DATE MODIFIED: 10/19

# vaughn concrete products, inc.

12650 Tucson Street • Henderson, Colorado 80640 • 303-659-3747, Fax 303-659-1333  
2671 South Greeley Hwy • Cheyenne, Wyoming 82007 • 307-634-0695, Fax 307-634-0694

[www.vaughnconcreteproducts.com](http://www.vaughnconcreteproducts.com)

## Regulation 43

### Colorado Department Of Public Health And Environment

3. Septic Tank Design and Dimension Criteria
  - a. A septic tank shall have two or more compartments or more than one tank may be used in series. The first compartment of a two-compartment tank or the first tank in a series shall hold no less than one-half of the required effective volume.
  - b. Inlet invert shall be at least two inches higher than the outlet invert.
  - c. Inlet tee or baffle shall extend above the surface of the liquid at least five inches and shall extend a minimum of eight inches below the liquid surface.
  - d. Outlet tee or baffle shall extend at least 14 inches below the outlet invert and, if needed, be modified to accommodate an effluent screen. The outlet tee or baffle that accommodates an effluent screen must be located so that the effluent screen has sufficient clearance to be removed through the access opening with a riser in place.