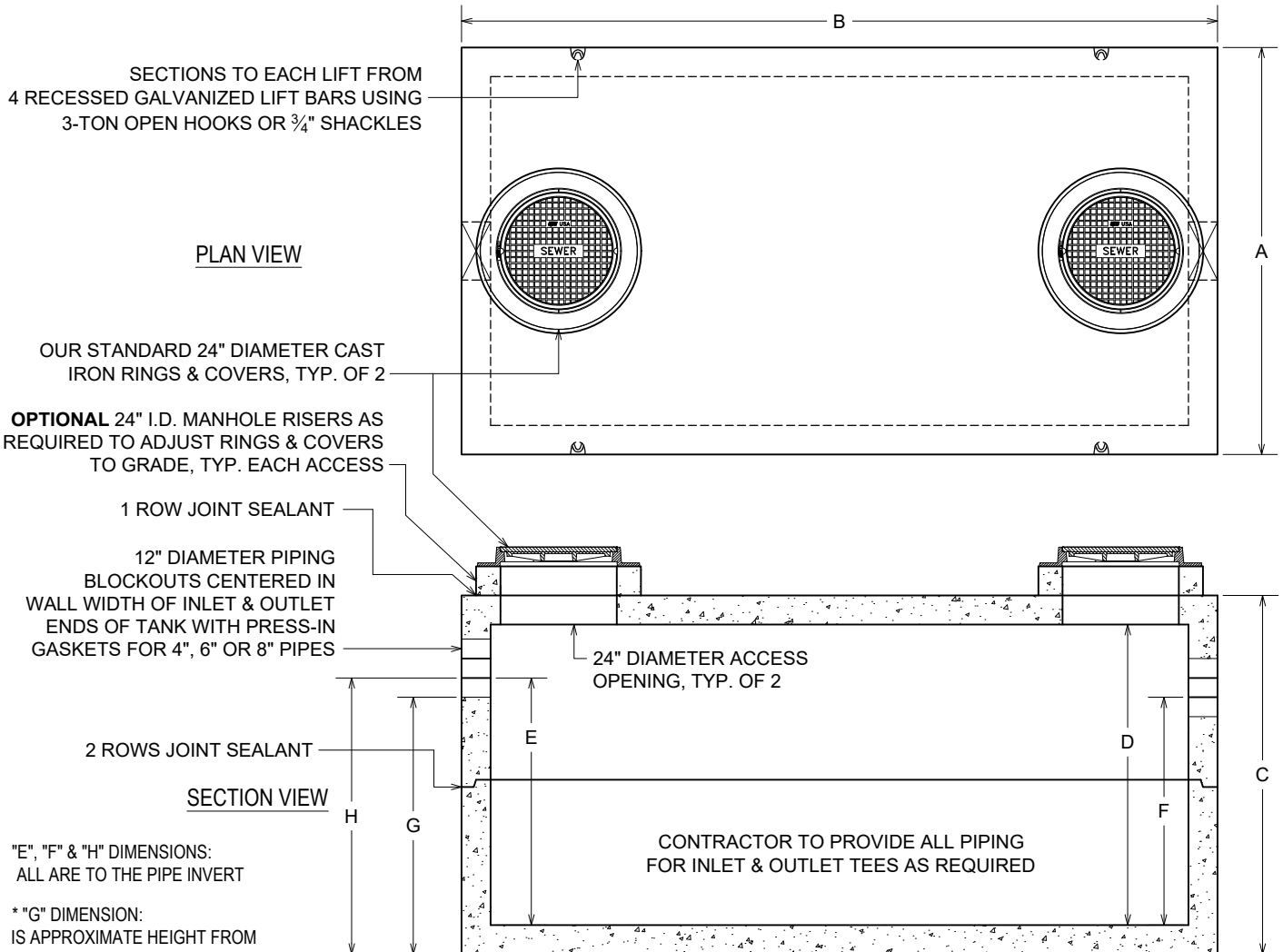


PRECAST CONCRETE SEPTIC HOLDING TANKS

2000 GALLON & LARGER CAPACITIES

ALSO USED FOR SINGLE COMPARTMENT TANKS



"E", "F" & "H" DIMENSIONS:
ALL ARE TO THE PIPE INVERT

*"G" DIMENSION:
IS APPROXIMATE HEIGHT FROM
BOTTOM OF PRECAST UNIT TO
BOTTOM OF 12" HOLE, NOT TO
BOTTOM OF THE PIPE INVERT

**"H" DIMENSION:
IS FOR DIGGING INFORMATION ONLY, APPROXIMATE
HEIGHT FROM BOTTOM OF PRECAST UNIT TO THE PIPE
INVERT, EXCAVATION SHOULD ALLOW 1' ON EACH SIDE
OF TANK FOR SLING REMOVAL

FLOOR, WALLS & ROOF 6" THICK

REINFORCED FOR AASHTO HS-20-44 LOADINGS
CONCRETE: 5000 P.S.I. MINIMUM

LARGER SIZE UNITS UP TO 30,000 GALLONS ARE AVAILABLE -
CALL FOR INFORMATION

ACTUAL DIMENSIONS OF CONCRETE PRODUCTS MAY VARY SLIGHTLY

SEPTIC HOLDING TANK DIMENSIONS					
	2000	2500	3000	3500	4000
A	7'-0"	7'-0"	7'-0"	7'-0"	7'-0"
B	13'-0"	13'-0"	13'-0"	17'-0"	17'-0"
C	74"	86"	98"	87"	96"
D	62"	74"	86"	75"	84"
E (4" PIPE)	51"	63"	75"	64"	73"
E (6" PIPE)	50"	62"	74"	63"	72"
E (8" PIPE)	49"	61"	73"	62"	71"
F (4" PIPE)	47"	59"	71"	60"	69"
*G	53"	65"	77"	66"	75"
DIGGING DEPTH INFORMATION					
**H (4" PIPE)	57"	69"	81"	70"	79"
**H (6" PIPE)	56"	68"	80"	69"	78"
**H (8" PIPE)	55"	67"	79"	68"	77"
TOTAL APPROXIMATE WEIGHTS (IN LBS)					
	31,500	34,900	38,200	43,500	46,800
HEAVIEST PIECE (MAX. WEIGHT) BASED ON EQUAL HEIGHT SECTIONS (IN LBS)					
	15,000	16,200	17,400	20,500	22,000

DRAWING IS NOT TO SCALE
2000+ GAL SEPTIC HOLDING TANK.DWG
DATE CREATED: 11 / 05
UPDATED: 10 / 19

vaughn concrete products, inc.

12650 Tucson Street • Henderson, Colorado 80640 • 303-659-3747, Fax 303-659-1333
2671 South Greeley Hwy • Cheyenne, Wyoming 82007 • 307-634-0695, Fax 307-634-0694
10021 Amarillo Blvd East • Amarillo, Texas 79108 • 806-374-3747, Fax 806-335-3717