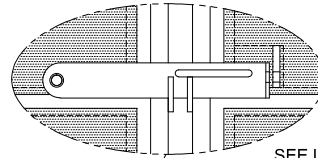


PRECAST CONCRETE TRASH ENCLOSURE

DOUBLE-DUMPSTER ELEVATIONS

SHEET 1 OF 3

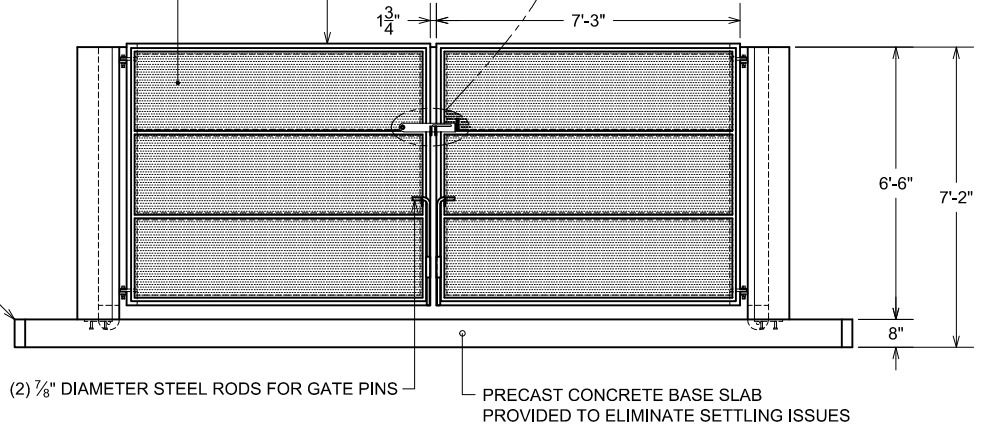
EACH STEEL GATE FRAME COMPRISED OF:
 (1) VERTICAL 3"X3" STEEL TUBE
 (1) VERTICAL 2"X3" STEEL TUBE
 (4) HORIZONTAL 2"X3" STEEL TUBES;
 11-GAUGE PERFORATED STEEL GRATING WITH 1/4" DIAMETER HOLES ON 3/8" STAGGERED CENTERS WELDED TO 1"X1/2" FLAT FRAME & WELDED TO THE GATE FRAME



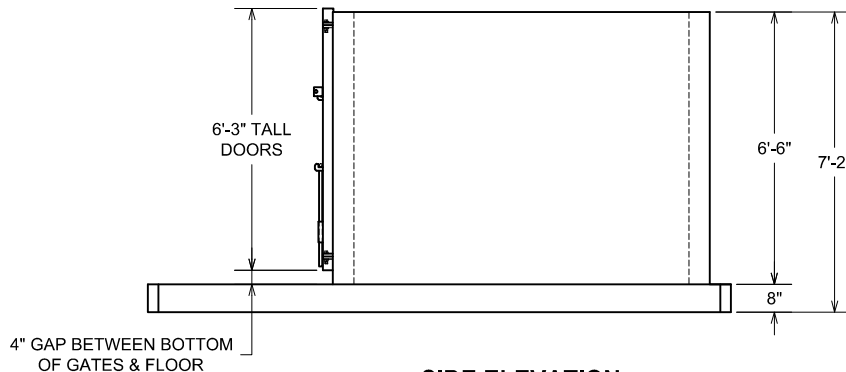
SEE LATCH DETAILS ON SHEET 2

PAINTED RIGID STEEL DOUBLE 180° OUT-SWING GATES 75" TALL X 87" WIDE MOUNTED TO 2 STEEL CHANNELS CAST IN EACH END WALL OF THE FRONT OPENING USING EXTRA HEAVY DUTY HINGES; GATES PROVIDED WITH HOLD OPEN/CLOSED GATE PINS & PADLOCK LATCH

SQUARE EDGE TO MATCH ADJACENT PAVING, DIRT OR CONCRETE



FRONT ELEVATION



SIDE ELEVATION

WEIGHTS:

- BASE WEIGHS APPX. 28,000 LBS.
- WALLS WEIGH APPX. 17,100 LBS.
- GATES EACH WEIGH APPX. 1,200 LBS.

LIFTING:

- BASE & WALLS TO EACH LIFT FROM 4 RECESSED GALVANIZED LIFT BARS

NOTES:

- CONCRETE: 5000 P.S.I. MINIMUM
- REINFORCING: GRADE 60 MINIMUM
- FINISH: GRAY, FORM FINISH STANDARD; OPTIONAL THOROCCOAT TEXTURED PAINT AVAILABLE

ACTUAL DIMENSIONS OF CONCRETE PRODUCTS MAY VARY SLIGHTLY



DRAWING NOT TO SCALE

TRASH ENCLOSURE, DOUBLE DUMPSTER UNIT, 2015.DWG
 DATE CREATED: 3/15
 UPDATED: 3/16

12650 Tucson Street • Henderson, Colorado 80640 • 303-659-3747, Fax 303-659-1333
 2671 South Greeley Hwy • Cheyenne, Wyoming 82007 • 307-634-0695, Fax 307-634-0694
 10021 Amarillo Blvd East • Amarillo, Texas 79108 • 806-374-3747, Fax 806-335-3717

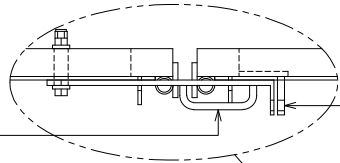
www.vaughnconcreteproducts.com

PRECAST CONCRETE TRASH ENCLOSURE

DOUBLE-DUMPSTER UNIT

SHEET 2 OF 3

2½" WIDE X 16¼" LONG X ⅜" THICK STEEL SWING LATCH WITH ½" ROUND HANDLE; LATCH MOUNTED TO THE GATE USING ¾" PLATED BOLT WITH ELASTIC LOCK-NUT; FLANGE OF LATCH PROVIDED WITH A HOLE FOR PADLOCK



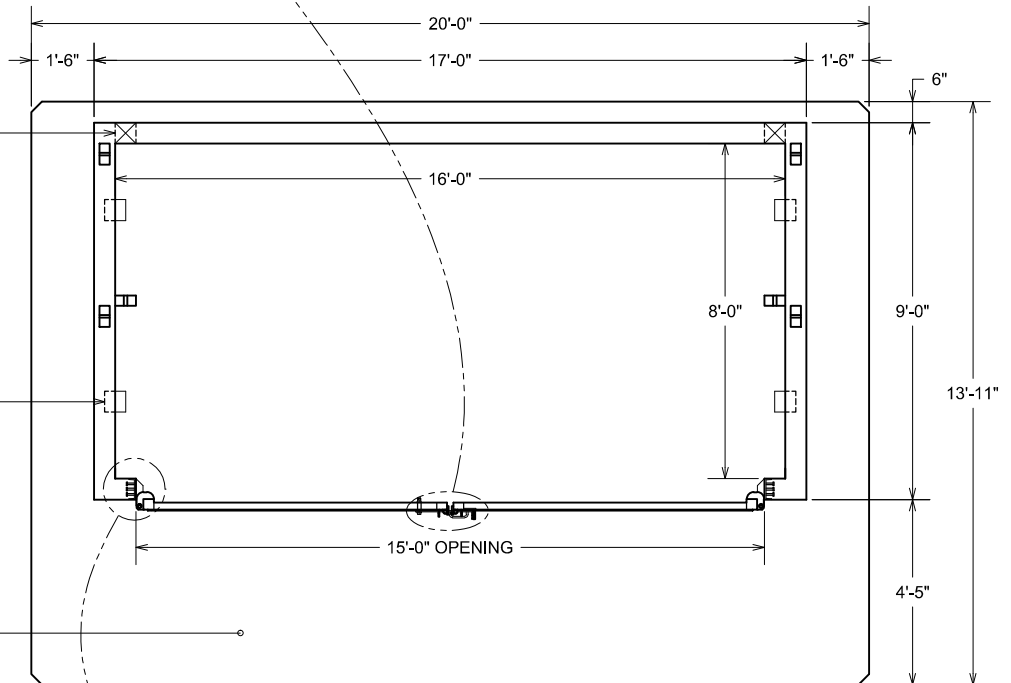
FLAT PLATE WELDED TO GATE; PLATE PROVIDED WITH A HOLE FOR PADLOCK

LATCH DETAIL

6" WIDE X 4" TALL DRAIN BLOCKOUTS CAST IN THE BOTTOM OF THE BACK WALL IN EACH CORNER

GALVANIZED STEEL WELD PLATES CAST IN WALLS & BASE SLAB TO ALLOW ENCLOSURE TO BE WELDED TO THE BASE SLAB

BASE SLAB EXTENDS PAST GATES TO ALLOW DUMPSTERS TO BE ROLLED OUT FOR SERVICE



PLAN VIEW

WEIGHTS:

- WALLS WEIGH APPX. 17,100 LBS.
- GATES EACH WEIGH APPX. 1,200 LBS.

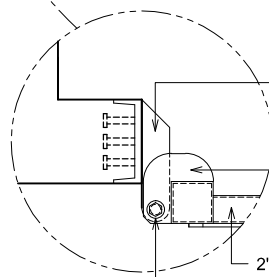
LIFTING:

- BASE & WALLS TO EACH LIFT FROM 4 RECESSED GALVANIZED LIFT BARS

NOTES:

- CONCRETE: 5000 P.S.I. MINIMUM
- REINFORCING: GRADE 60 MINIMUM
- FINISH: GRAY, FORM FINISH STANDARD; OPTIONAL THOROCCOAT TEXTURED PAINT AVAILABLE

ACTUAL DIMENSIONS OF CONCRETE PRODUCTS MAY VARY SLIGHTLY



2" WIDE X 8¾" LONG X ⅜" THICK FLAT WELDED TO THE GATE FRAME; ¾" DIAMETER HOLE IN FLAT FOR HINGE POINT; 2 PER GATE

5" WIDE X 5" LONG X ⅜" THICK HINGE PLATE WELDED TO THE 3"X3" STEEL GATE TUBE; ¾" DIAMETER HOLE IN PLATE FOR HINGE POINT; 2 PLATES PER GATE

2"X3" STEEL TUBE GATE FRAME

GATE SECURED TO HINGE USING ¾" PLATED BOLT & ELASTIC LOCK-NUT

HINGE DETAIL



DRAWING NOT TO SCALE

TRASH ENCLOSURE, DOUBLE DUMPSTER UNIT, 2015.DWG
DATE CREATED: 1/15
UPDATED: 3/16

12650 Tucson Street • Henderson, Colorado 80640 • 303-659-3747, Fax 303-659-1333
2671 South Greeley Hwy • Cheyenne, Wyoming 82007 • 307-634-0695, Fax 307-634-0694
10021 Amarillo Blvd East • Amarillo, Texas 79108 • 806-374-3747, Fax 806-335-3717

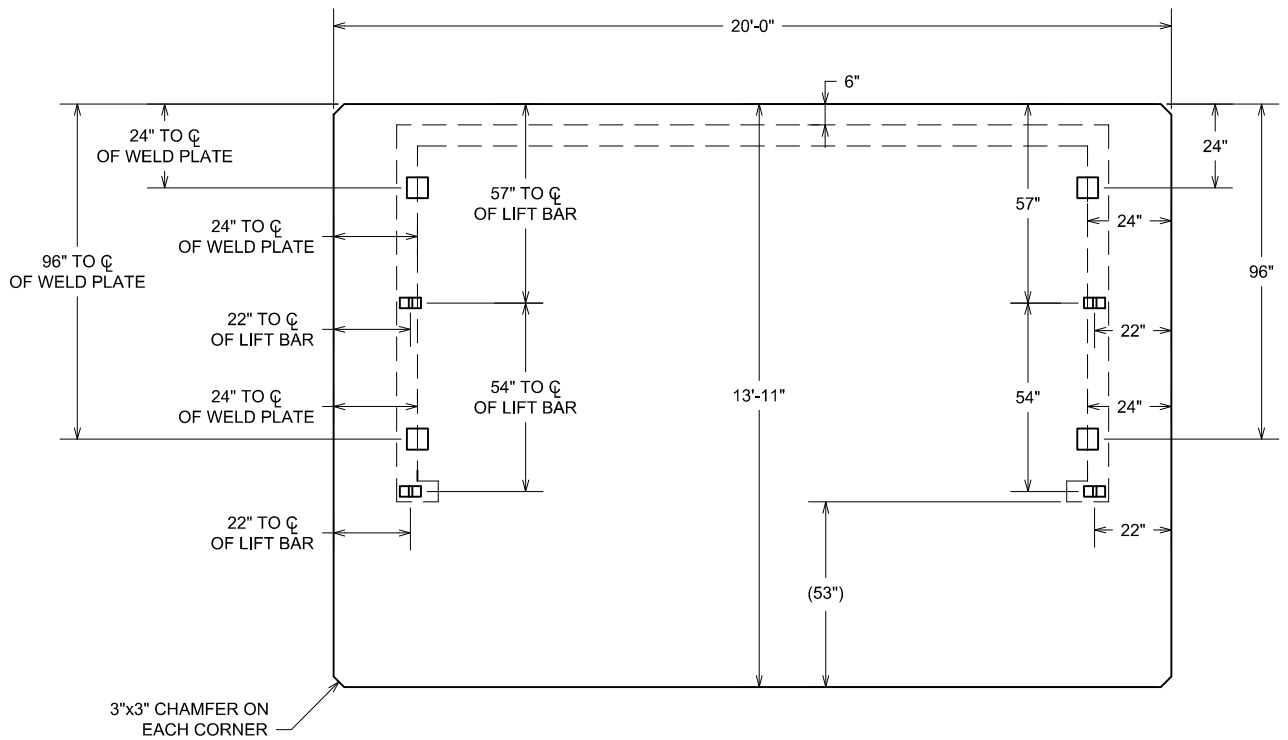
www.vaughnconcreteproducts.com

PRECAST CONCRETE

TRASH ENCLOSURE

DOUBLE-DUMPSTER BASE SLAB

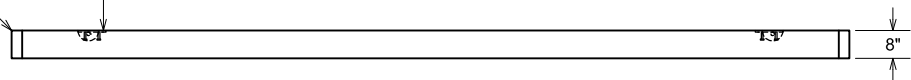
SHEET 3 OF 3



PLAN VIEW

SQUARE EDGE LIGHTLY STONED TO MATCH ADJACENT PAVING, DIRT OR CONCRETE

(4) 8"x8"x1/2" GALVANIZED WELD PLATES CAST IN; EACH WELD PLATE WITH 4 HDAS



FRONT ELEVATION

WEIGHT:

- BASE WEIGHS APPX. 28,000 LBS.

LIFTING:

- BASE LIFT FROM 4 RECESSED GALVANIZED LIFT BARS

NOTES:

- CONCRETE: 5000 P.S.I. MINIMUM
- REINFORCING: GRADE 60 MINIMUM
- FINISH: GRAY, FORM FINISH STANDARD

ACTUAL DIMENSIONS OF CONCRETE PRODUCTS MAY VARY SLIGHTLY



DRAWING NOT TO SCALE

TRASH ENCLOSURE, DOUBLE DUMPSTER UNIT, 2015.DWG
DATE CREATED: 3/15
UPDATED: 3/16

12650 Tucson Street • Henderson, Colorado 80640 • 303-659-3747, Fax 303-659-1333
2671 South Greeley Hwy • Cheyenne, Wyoming 82007 • 307-634-0695, Fax 307-634-0694
10021 Amarillo Blvd East • Amarillo, Texas 79108 • 806-374-3747, Fax 806-335-3717

www.vaughnconcreteproducts.com