

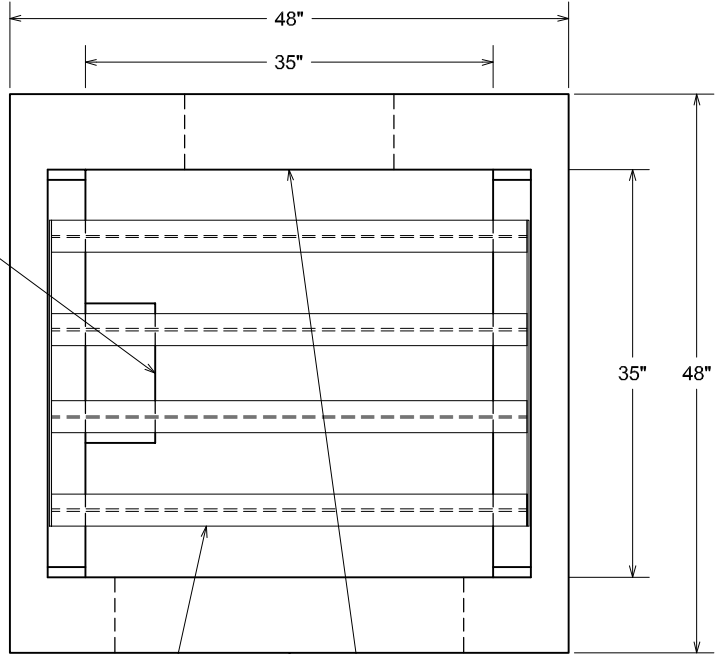
PRECAST CONCRETE

TYPE C INLET

35" WIDE X 35" LONG INSIDE DIMENSIONS

OUR STANDARD RUBBER ENCASED STEEL STEPS @ 12" O.C.

PLAN VIEW



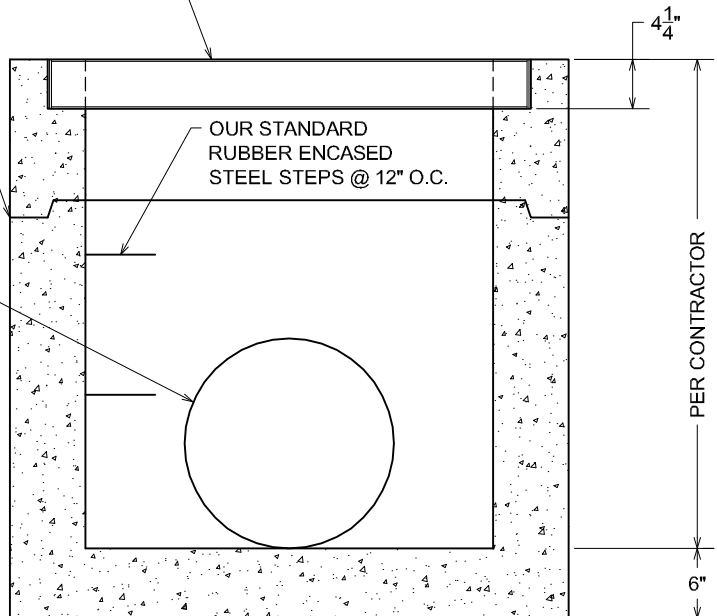
SHOWN WITH FABRICATED GRATE WITH (4) S4 x 7.7 BEAMS; ALSO AVAILABLE WITH ALTERNATE CLOSE MESH GRATE (REFERENCE C-DOT'S M-604-10 PLAN SHEET FOR GRATE INFORMATION)

PIPING BLOCKOUTS FOR CONTRACTOR TO GROUT IN PIPES; QUANTITY, SIZE & LOCATION PER CONTRACTOR

STANDARD 1½" SHIP LAP JOINT SUPPLIED FOR STRUCTURES OVER 4'-6" TALL, EACH JOINT SEALED WITH CONSEAL JOINT SEALANT

SECTION VIEW

PIPING BLOCKOUTS FOR CONTRACTOR TO GROUT IN PIPES; QUANTITY, SIZE & LOCATION PER CONTRACTOR



OUR STANDARD RUBBER ENCASED STEEL STEPS @ 12" O.C.

WEIGHT

- APPX. WEIGHT FOR 3'-0" I.D. TALL INLET: 4,200 LBS.
- APPX. 1,000 LBS./FT. FOR ADDITIONAL HEIGHT

NOTES:

- CONCRETE: 4000 P.S.I. MINIMUM
- REINFORCING: GRADE 60 MINIMUM
- DESIGNED FOR AASHTO HS-20-44 LOADINGS
- 6½" THICK WALLS, 6" THICK FLOOR

ACTUAL DIMENSIONS OF CONCRETE PRODUCTS MAY VARY SLIGHTLY

DRAWING NOT TO SCALE

TYPE-C INLET-CO.DWG
DATE CREATED: 11/04
UPDATED: -----

vaughn concrete products, inc.

12650 Tucson Street • Henderson, Colorado 80640 • 303-659-3747, Fax 303-659-1333
 2671 South Greeley Hwy • Cheyenne, Wyoming 82007 • 307-634-0695, Fax 307-634-0694
 10021 Amarillo Blvd East • Amarillo, Texas 79108 • 806-374-3747, Fax 806-335-3717