

# PRECAST CONCRETE M1 INLET BOX

2'-6" WIDE X 4'-6" LONG INSIDE DIMENSIONS

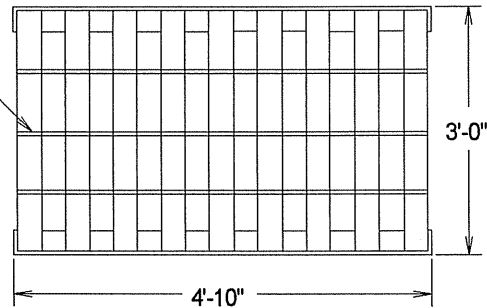
6" WALLS AND FLOOR

PROVIDED WITH TYPE 3 GRATE

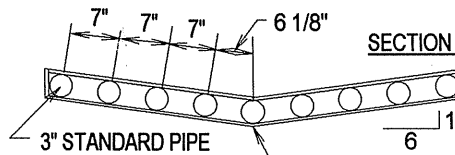
MANUFACTURED TO WYOMING DEPARTMENT  
OF TRANSPORTATION STANDARDS

NOTE: FRAME TO HAVE SAME INSIDE DIMENSIONS  
AS THE INSIDE OF PRECAST BOX TO ACCOMMODATE  
VARIOUS DEPTHS OF INLETS

TYPE 3 GRATE PLAN VIEW OF GRATE

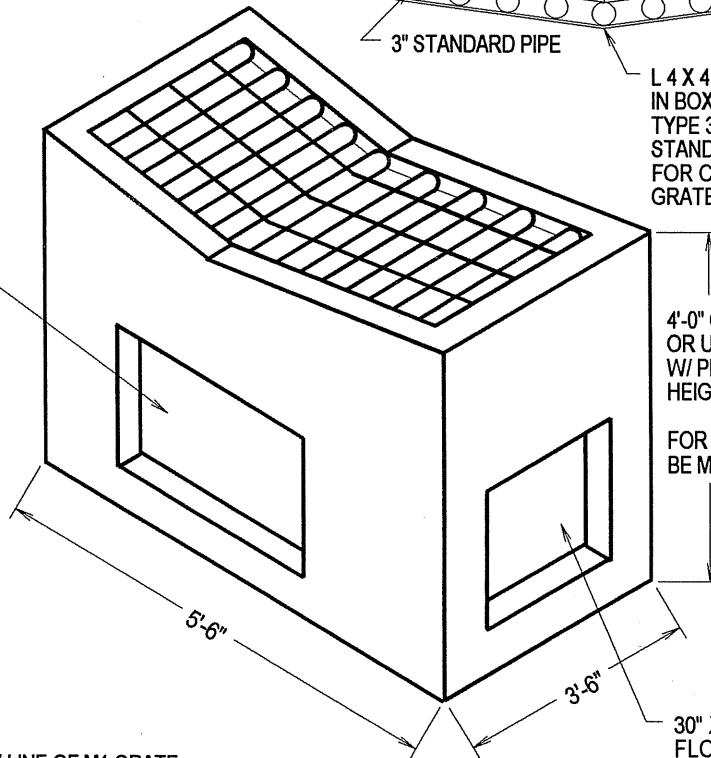


SECTION VIEW OF GRATE



L 4 X 4 X 1/4 USED FOR FRAME  
IN BOX AND FOR FRAME FOR  
TYPE 3 GRATE (SEE WYOMING  
STANDARDS 625-01A SHEET 1  
FOR COMPLETE FRAME AND  
GRATE INFORMATION)

36" WIDE X 30" HIGH  
KNOCKOUTS AT FLOOR  
LEVEL, TYPICAL OF EACH  
LONG SIDE, CENTERED



4'-0" OR 4'-6" W/ KNOCKOUTS  
OR UNIT CAN BE CUSTOM CAST  
W/ PIPING BLOCKOUTS W/  
HEIGHT UP TO 5'-0"

FOR ADDITIONAL DEPTH, BOX WILL  
BE MANUFACTURED IN SECTIONS

APPROXIMATE WEIGHTS:  
4'-0" O.D. TALL - 5800 LBS.  
4'-6" O.D. TALL - 7000 LBS.

D DIMENSION IS FROM FLOW LINE OF M1 GRATE  
TO FLOW LINE OF PIPE, IF D DIMENSION IS OVER 4' BOX  
WILL BE MANUFACTURED IN SECTIONS WITH INDUSTRY  
STANDARD SHIP LAP JOINT SEALED WITH CONSEAL JOINT SEALANT

DESIGNED FOR AASHTO HS-20-44 LOADING  
CONCRETE 4000 P.S.I. MINIMUM

ACTUAL DIMENSIONS OF CONCRETE PRODUCTS MAY VARY SLIGHTLY  
DRAWING IS NOT TO SCALE

30" X 30" KNOCKOUTS AT  
FLOOR LEVEL, TYPICAL  
OF EACH END, CENTERED

**vaughn**  
**concrete products, inc.**

11/98

2671 So. Greeley Hwy • Cheyenne, Wyoming 82007 • 307-634-0695, Fax 307-634-0694