

# PRECAST CONCRETE GREASE INTERCEPTORS

## 2000 GALLON & LARGER CAPACITIES IN NEW MEXICO

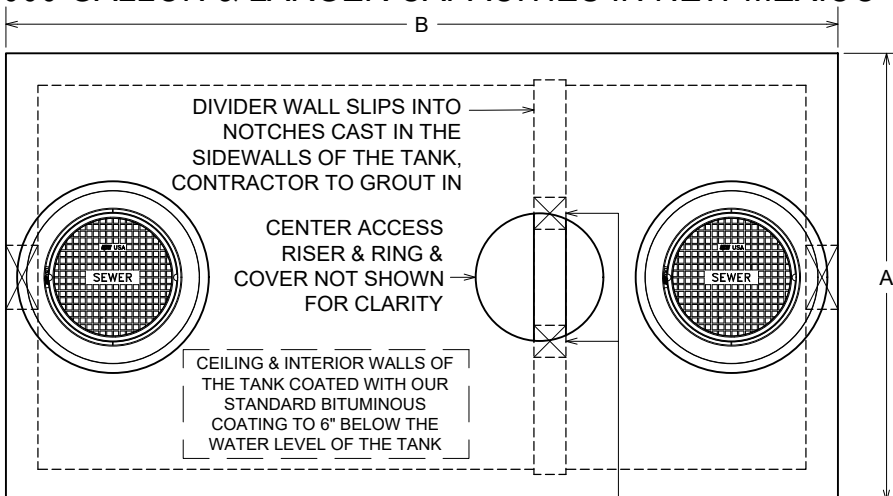
APPROVED BY : \_\_\_\_\_  
DATE : \_\_\_\_\_

SELECT SIZE:

2000 \_\_\_\_\_  
2500 \_\_\_\_\_  
3000 \_\_\_\_\_  
3500 \_\_\_\_\_  
4000 \_\_\_\_\_

PLAN VIEW

IT IS THE EXCAVATOR'S OR INSTALLER'S RESPONSIBILITY TO REQUEST OUR **INSTALLATION GUIDELINES** PRIOR TO INSTALLING THIS TANK



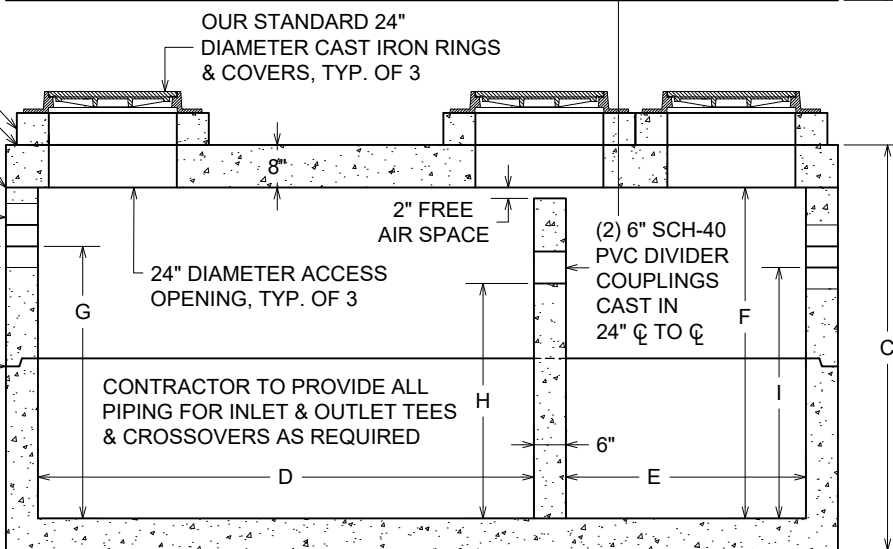
OPTIONAL 24" I.D. MANHOLE RISERS AS REQUIRED TO ADJUST RINGS & COVERS TO GRADE, TYP. EACH ACCESS

CONSEAL JOINT SEALANT

12" DIAMETER PIPING BLOCKOUTS CAST IN THE INLET & OUTLET END OF THE TANK WITH GASKETS FOR 4", 6" OR 8" PIPES

2 ROWS CONSEAL JOINT SEALANT

SECTION VIEW



"G", "H", "I" & "K" DIMENSIONS:  
ALL ARE TO THE PIPE INVERT

\*"J" DIMENSION:

IS APPROXIMATE HEIGHT FROM BOTTOM OF PRECAST UNIT TO BOTTOM OF 12" HOLE, NOT TO BOTTOM OF THE PIPE INVERT

\*\*"K" DIMENSION:

IS FOR DIGGING INFORMATION ONLY, APPROXIMATE HEIGHT FROM BOTTOM OF PRECAST UNIT TO THE PIPE INVERT, EXCAVATION SHOULD ALLOW 1" ON EACH SIDE OF INTERCEPTOR FOR SLING & LIFTING BOLT REMOVAL

WALLS & FLOOR TO BE 6" THICK

REINFORCED FOR AASHTO HS-20-44 LOADINGS  
CONCRETE: 5000 P.S.I. MINIMUM

LARGER SIZE UNITS UP TO 30,000 GALLONS ARE AVAILABLE - CALL FOR INFORMATION

DRAWING IS NOT TO SCALE

ACTUAL DIMENSIONS OF CONCRETE PRODUCTS MAY VARY SLIGHTLY

GREASE INTERCEPTOR DIMENSIONS

|   | 2000   | 2500   | 3000   | 3500   | 4000   |
|---|--------|--------|--------|--------|--------|
| <b>A</b>  | 7'-0"  | 7'-0"  | 7'-0"  | 7'-0"  | 7'-0"  |
| <b>B</b>  | 13'-0" | 13'-0" | 13'-0" | 17'-0" | 17'-0" |
| <b>C</b>  | 76"    | 88"    | 100"   | 89"    | 98"    |
| <b>D</b>  | 93"    | 93"    | 93"    | 120"   | 120"   |
| <b>E</b>  | 45"    | 45"    | 45"    | 66"    | 66"    |
| <b>F</b>  | 62"    | 74"    | 86"    | 75"    | 84"    |
| <b>G (4" PIPE)</b>  | 51"    | 63"    | 75"    | 64"    | 73"    |
| <b>G (6" PIPE)</b>  | 50"    | 62"    | 74"    | 63"    | 72"    |
| <b>G (8" PIPE)</b>  | 49"    | 61"    | 73"    | 62"    | 71"    |
| <b>H</b>  | 44"    | 56"    | 68"    | 57"    | 66"    |
| <b>I (4" PIPE)</b>  | 47"    | 59"    | 71"    | 60"    | 69"    |
| <b>*J</b>   | 53"    | 65"    | 77"    | 66"    | 75"    |
| <b>DIGGING DEPTH INFORMATION</b>  |        |        |        |        |        |
| <b>**K (4" PIPE)</b>  | 57"    | 69"    | 81"    | 70"    | 79"    |
| <b>**K (6" PIPE)</b>  | 56"    | 68"    | 80"    | 69"    | 78"    |
| <b>**K (8" PIPE)</b>  | 55"    | 67"    | 79"    | 68"    | 77"    |
| <b>TOTAL APPROXIMATE WEIGHTS (IN LBS)</b>                                   |        |        |        |        |        |
|   | 31,500 | 34,900 | 38,200 | 43,500 | 46,800 |
| <b>HEAVIEST PIECE (MAX. WEIGHT) BASED ON EQUAL HEIGHT SECTIONS (IN LBS)</b> |        |        |        |        |        |
|   | 15,000 | 16,200 | 17,400 | 20,500 | 22,000 |

2000+ GAL GH-NM.DWG  
DATE CREATED: 12/09  
UPDATED: 6/19

# vaughn concrete products, inc.

12650 Tucson Street • Henderson, Colorado 80640 • 303-659-3747, Fax 303-659-1333  
2671 South Greeley Hwy • Cheyenne, Wyoming 82007 • 307-634-0695, Fax 307-634-0694  
10021 Amarillo Blvd East • Amarillo, Texas 79108 • 806-374-3747, Fax 806-335-3717

[www.vaughnconcreteproducts.com](http://www.vaughnconcreteproducts.com)